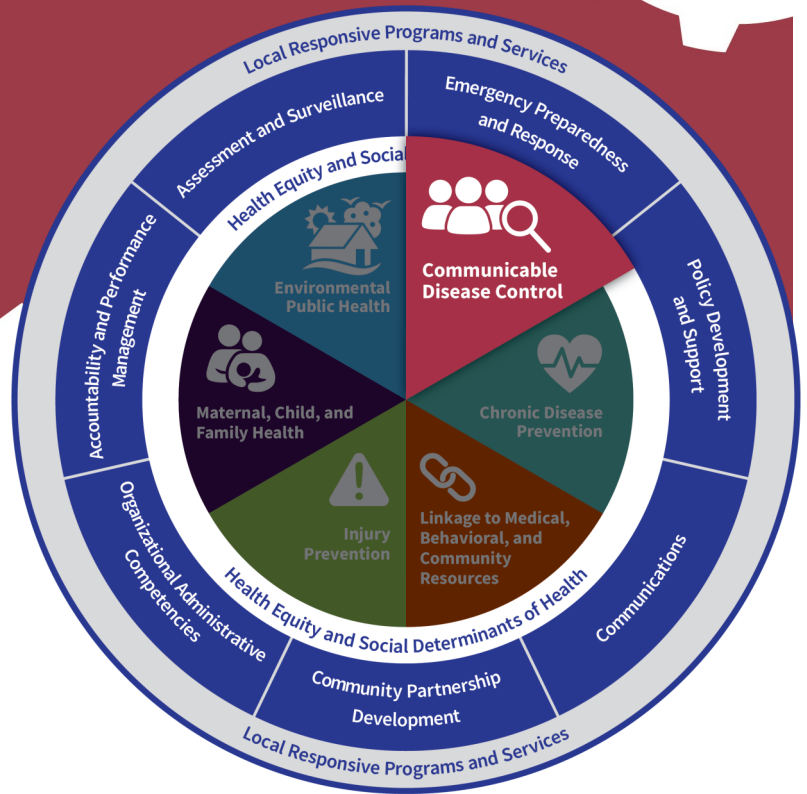


FOUNDATIONAL AREA: Communicable Disease Control

SPECS

Public health agencies work with partners to slow and stop the spread of disease in a community. These communicable disease control strategies include using surveillance to quickly identify diseases that pose a threat to public health, isolate their cause, and prevent their spread using a variety of methods.

Immunizations, community education, and non-pharmaceutical interventions like social distancing play a significant role in communicable disease control. Public health agencies respond to data showing a disparate impact of communicable disease and work to assure health equity.



Foundational Capabilities Foundational Areas

DISCUSSION

1. What strengths and weaknesses have been highlighted in our communicable disease program as a result of COVID-19?
2. What community-level policies are important to support communicable disease control?
3. How is our current data collection strategy offering us the opportunity to analyze data for health inequities related to communicable disease?

APPLICATION

1. Identify changes our organization needs to make, or additional partnerships required to effectively collect and maintain reliable, comparable, and valid data that provide information on conditions of public health importance and population health.

#HealthierMO is a grassroots initiative to transform Missouri’s public health system into a stronger, more sustainable, culturally relevant and responsive system that can offer every Missourian the fair opportunity for health. #HealthierMO is a project of the Missouri Public Health Association, with support from Missouri State University. Funding is provided by Missouri Foundation for Health and Health Forward Foundation.

RESOURCES

- Communicable Disease Resources, DHSS
- Communicable Disease Investigation Reference Manual (C-DIRM), DHSS
- Immunization and Infectious Diseases, Healthy People 2020
- National Foundation for Infectious Diseases
- Infectious Disease Toolkit for Continuums of Care (People Who are Homeless), HUD
- COVID-19 and Equity, APHA